

Fall 9-2013

Fall 2013

Center for Research & Grants

Follow this and additional works at: <http://scholarlycommons.baptisthealth.net/bg-research-matters>

Recommended Citation

Center for Research & Grants, "Fall 2013" (2013). *Research Matters*. Book 10.
<http://scholarlycommons.baptisthealth.net/bg-research-matters/10>

This Book is brought to you for free and open access by the Newsletters at Scholarly Commons @ Baptist Health South Florida. It has been accepted for inclusion in Research Matters by an authorized administrator of Scholarly Commons @ Baptist Health South Florida. For more information, please contact Carrief@baptisthealth.net.



RESEARCH MATTERS

Center for Research & Grants

On behalf of the CRG Research Summit Committee, we would like to invite you to attend the 2013 BHSF Research Summit. This event will take place on **Friday, October 4th at the Dadeland Marriott.**

This cross-disciplinary forum will examine innovative strategies for dealing with the challenges researchers face today and the impending impact the Affordable Care Act (ACA) will bring to the world of medical research. Exciting and dynamic speakers will present on topics to help keep you up-to-date on the latest developments regarding:



- Regulatory changes impacting the future of research.
- Provisions set forth by the Affordable Care Act for clinical research trial practice.
- Best practices in the acquisition, storage and exportation of clinical samples and data.
- Technological advances that will significantly impact patient engagement in clinical research and shift the patient’s role from research subject to research partner.
- Examples of web-based platforms for patient-engaged clinical research and patient consent.
- Potential and real challenges and opportunities the Affordable Care Act is expected to bring to sponsored research and patient recruitment.

Featured sessions include case studies from principal investigators and a multidisciplinary panel of experts who will analyze the ACA from academic, legal, medical and financial perspectives. You can register for the event online at <http://baptisthealth.net/en/physicians/pages/cme-symposiums.aspx>. For registration inquiries contact the CME office at 786-596-2398. If you have any questions regarding the 2013 Research Summit, please contact CRGResearch@baptisthealth.net

Baptist Health South Florida is accredited by the Accreditation Council for Continuing Medical Education to provide continuing medical education for physicians. Baptist Health South Florida designates this activity for a maximum of 5.25 AMA PRA Category 1 Credits™. Physicians should claim only the credit commensurate with the extent of their participation in the activity. This activity has been approved for 5.25 credit hours, CE Broker Course #20-405448, by the Florida Boards of Medicine, Osteopathic Medicine and Podiatric Medicine. This activity has been approved for 5.25 credits for Nursing, Pharmacy, Clinical Social Work, Marriage & Family Therapy & Mental Health Counseling, Respiratory Care (category personal growth) 5.0 hours. Baptist Health South Florida CE Broker Provider #50-182.

“Attendance at the 2013 Baptist Health South Florida Research Summit has been pre Approved for up to **5.0 points** of clinical research-related professional development on applications for Maintenance of ACRP’s CCRC®, CCRA®, or CPI® certification designations.”

VOLUME 2, ISSUE 3

FALL 2013 EDITION

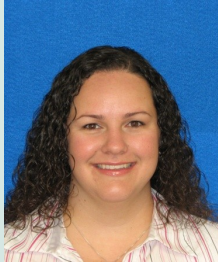
In this issue:

2013 BHSF Research Summit	1
Nursing Research Spotlight	2
Grants Update	3
REDCap is coming!!! REDCap is coming!!!	3
Administration Resources	4

Nursing Research Spotlight

Research Dissemination Grand Rounds

BHM Grand Rounds was a tremendous success. We would like to thank all of the presenters and those who attended. For those of you that were not able to attend, below you will find a synopsis of the research studies presented.



Red Blood Cell Transfusion Practices in an Orthopedic Unit. Ileana Bonfante, PI. Unit 3 Main

The purpose of this study was to investigate if implementing a transfusion order set and eliminating autologous blood donations would minimize length of stay, infection rate, transfusion related complications, costs, and risk of perioperative anemia in total knee and total hip replacement patients.

Findings

- Patient age and autologous blood donors were significant predictors of receiving a blood transfusion.
- Higher rate of transfusions in patients age 70-80.
- Autologous blood donors and patients who received blood transfusions had increased LOS.
- Autologous blood donors had lower pre-op hemoglobin.
- There was a significant difference in the hemoglobin trigger value before and after implementation of a blood transfusion order set.
- Age, hemoglobin post-op day zero, and autologous blood donor as individuals were found to be significant pre-

Baptist Hospital

Findings

Survey:

Twenty eight nurses participated in the survey. Results showed:
79% would prefer to receive non emergent information by text.
71% thought texting non emergent information would help decrease interruptions.
59% thought texting non emergent information would increase patient satisfaction.
72% thought texting non emergent information would save time.

Time and Motion:

An independent-samples *t*-test was conducted to compare the total time in seconds of interruptions for phone calls and texting. There was a significant difference in time for phone call, ($M= 36.41$, $SD=51.53$) and texting, ($M= 2.81$, $SD=1.79$); $t(219.48) = 5.72$, $p < 0.001$ (two tailed).

It is interesting to note that the majority of the interruptions occurred during medication administration which poses significant risks.

Got the Message: Texting vs. Talking. Melanie Santos, PI. Unit-4 Tower



The purpose of this study was twofold. A survey was used to identify staff perceptions of receiving non-emergent information by texting in the med-surgical unit. Secondly, a time and motion study was conducted to determine if texting of non-emergent information would decrease total time of interruptions as compared to phone call interruptions. Non-Emergent information was defined as

- Notices of Meetings/Huddles/In-services
- Notification of admission/discharges
- Notification that the administrative partner has called a consult
- Notification of supplies coming from other departments
- General Unit Business

Grants Update

It's a major undertaking—preparing and submitting a research application to support your research training needs or pursue your scientific research. It is a highly competitive endeavor that can be subverted by lack of planning, preparation, disorganization and lackluster presentation. However, the Center for Research and Grants Grant Administrators are here to minimize that impact and support your research interests.



Our Grants Administrators have successfully secured the following funding that has helped some of our BHSF researchers support their research interests:

1. Slomo & Cindy Sylvian Foundation: \$7,500 for Diabetes Research at Baptist Health Follow-up Care
2. Neuroscience Nursing Foundation: \$2,100.97 and \$950 for ICU Research at West Kendall Baptist Hospital and South Miami Hospital
3. Florida Department of Health, Office of Rural Health: \$5,000 for Medicare Rural Hospital Flexibility (FLEX) Program 2012 at Mariners Hospital Oncology Services
4. Susan G. Komen for the Cure Foundation: \$26,250 and \$10,000 for Baptist Health Breast Center's CareCoach™ and Genetic Risk Education Service (GRES) programs

Contact us at grantsinfo@baptisthealth.net to find out how we can help you.

REDCap is coming!!! REDCap is coming!!!

Baptist Health South Florida will be implementing the REDCap (Research Electronic Data Capture) system in Q2 of this fiscal year. The REDCap application allows users to build and manage online surveys and databases quickly and securely, and is currently in production use or development build-status for more than **80,000 projects** with over **105,000 users** spanning numerous research focus areas across the consortium.




Additionally, BHSF will become part of the REDCap Consortium, composed of **770 active institutional partners** from CTSA, GCRC, RCMI and other institutions in **60 countries**. The consortium supports a secure web application (REDCap) designed exclusively to support data capture for research studies.

As a REDCap consortium member, we will have access to the REDCap Shared Library, a repository for REDCap data collection instruments and forms that can be downloaded and used by researchers at REDCap partner institutions. Curated instruments have been approved for inclusion by the REDCap Library Oversight Committee (REDLOC) after review for research relevance, accuracy in coding and function, and copyright issues.

We will have an introductory **REDCap session at our November 8th Research Rounds, 7:30 am to 8:30 am at Baptist Hospital, classroom 5.**

For more information on REDCap, visit <http://project-redcap.org/>.

EDUCATIONAL EVENTS

Date & Time	Event	Location
Friday, 10/4/2013 7:30 am - 3:30 pm	2013 BHSF Research Summit	Miami Dadeland Marriott
Friday, 11/8/2013 7:30 am - 8:30 am	Research Rounds: REDCap 	BHM - Classroom 5

Administration Resources Available

The Center for Research and Grants has resources available for pre-award administrative activities such as clinical study budget review, Medicare coverage analysis, coordination of documents, and communication with sponsors, partners, and Medicare Administrative Contractors (MACs), as follows:

- Reviewing and negotiating study agreements with sponsors in consultation with BHSF Legal Counsel
- Reviewing draft budgets and/or negotiating study budgets that cover BHSF costs and fall within Fair Market Value (FMV)
- Submitting investigational device trial reimbursement and extension requests to Florida's Medicare Administrative Contractor

This process endeavors to create a streamlined pre-award process for clinical studies, including standardizing compliance with Medicare rules and regulations and reducing turn-around times for the execution of clinical study agreements. To submit study documents for review, please contact ResearchAdmin@baptisthealth.net.



For more information • contact CRGResearch@baptisthealth.net or 786-594-6713